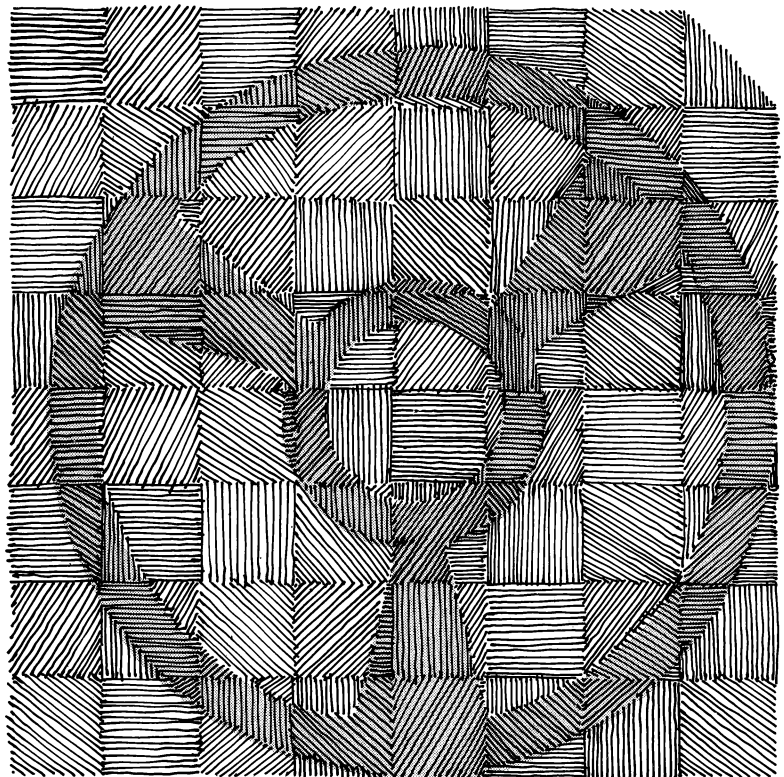


Department
of
Computer
Science



Kansas State University

Education and Research in Computer Sciences

A RESUME

CONTENTS

Foreword	3
Kansas State University	5
Department of Computer Science	7
Research Capabilities	9
Computing Resources	11
Abstracts of Research Grants	19
Personnel Resources	23



KANSAS STATE UNIVERSITY

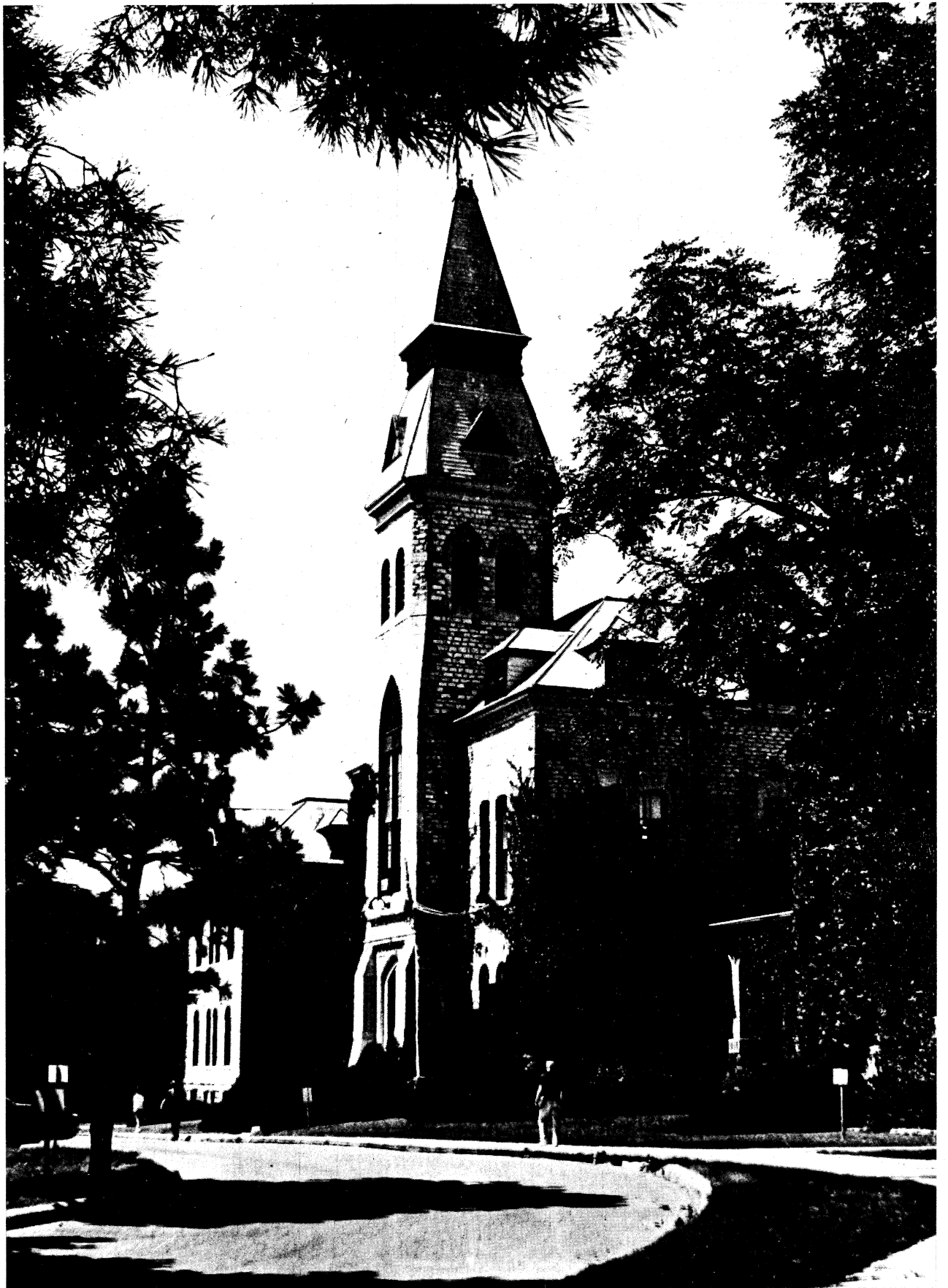
Department of Computer Science
Manhattan, Kansas 66506

The purpose of this brochure is to provide a description of the research capabilities of the Department of Computer Science, Kansas State University. Our capabilities as concerns education are fully described in the University's General Catalog. The Department offers a full spectrum of education in computer science to both graduate and undergraduate students. Research within the Department is complementary to the graduate student training.

The objective of our department research is to advance the boundary of knowledge in applied and theoretical computer science. Our fields of effort are not fixed but tend heavily toward the applied fields of computer science. The faculty and graduate students continually probe that boundary with exploratory techniques as they seek to further expand the science of computer usage.

Your interest in our department is greatly appreciated.

Paul S. Fisher
Head



**EDUCATION AND RESEARCH
IN
COMPUTER SCIENCE**

*A
RESUME*

KANSAS STATE UNIVERSITY

Kansas State University, Manhattan, Kansas, is the oldest land-grant college in the United States. It has grown from 52 students enrolled on September 2, 1863 to more than 16,000 students in 1975 to become one of the major educational institutions in America. K-State is fully accredited by the North Central Association of Colleges.

Launched as a primarily agricultural school, K-State has evolved into an important scientific and cultural university. Its primary thrust is still in the field of Agricultural Education and Research and KSU is known internationally for its contributions to crop and animal science and to agricultural economics and engineering. The university is also renowned for its contributions to the applied sciences and the majority of KSU students seek degrees in the disciplines of the applied sciences.

The University awards degrees of Bachelor of Arts, Science, Architecture and Music; Master of Arts, Science, Business Administration, Landscape Architecture, Music and Regional/Community Planning; and Doctor of Philosophy in 33 fields of study including Doctor of Veterinary Medicine. There are 60 academic departments on the campus and a Division of Continuing Education extends the University's educational services to more than 10,000 off-campus students. The KSU Agricultural Experiment Station conducts research on more than 7,000 acres of crop and grass lands in support of the University's training and research programs. In cooperation with the Atomic Energy Commission the University operates one of the major facilities for accelerating atomic particles. The Nuclear Engineering Department operates a TRIGA MKII nuclear reactor.

The 153-acre campus is located at Manhattan, Kansas, a city of 26,000 people. The city is located 120 miles west of Kansas City, Missouri, on the Kansas River, and 14 miles from the historic military reservation of Fort Riley. Access to Manhattan may be by Frontier and Capital Air Lines out of Kansas City International Airport or by car, Interstate Highway 70, 8 miles south of the city. Popular motels are located in the city and provide national standard and deluxe accommodations for visitors.